



THE CRAWFORD FUND ANNUAL CONFERENCE

## Food and Nutrition Security: Transformative Partnerships, Local Leadership and Co-Design

12-13 August 2024

Parliament House, Canberra, Australia, and online



# "Creating Strong Channels of Communication for Agriculture Policy Research in Indonesia"

Wahida Maghraby - ICASEPS

Session 2: Constructing Effective, High – Quality Research Partnership  
Tuesday, 13 August 2024



# Global Food Crisis

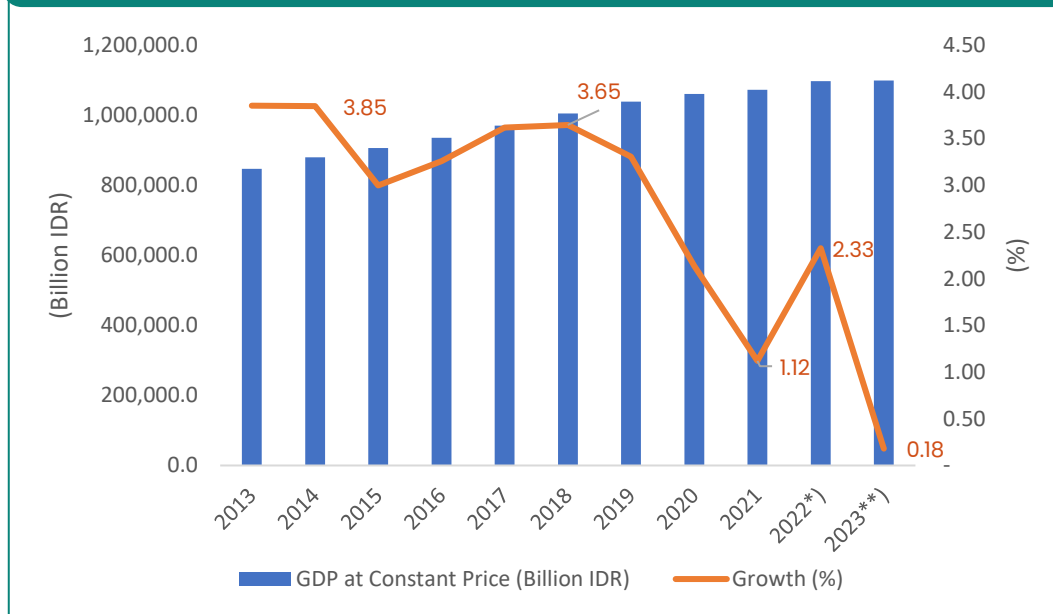


Sumber: FAOSTAT (2023), BPS (2023)



# The Contribution of Agriculture Sector to National GDP

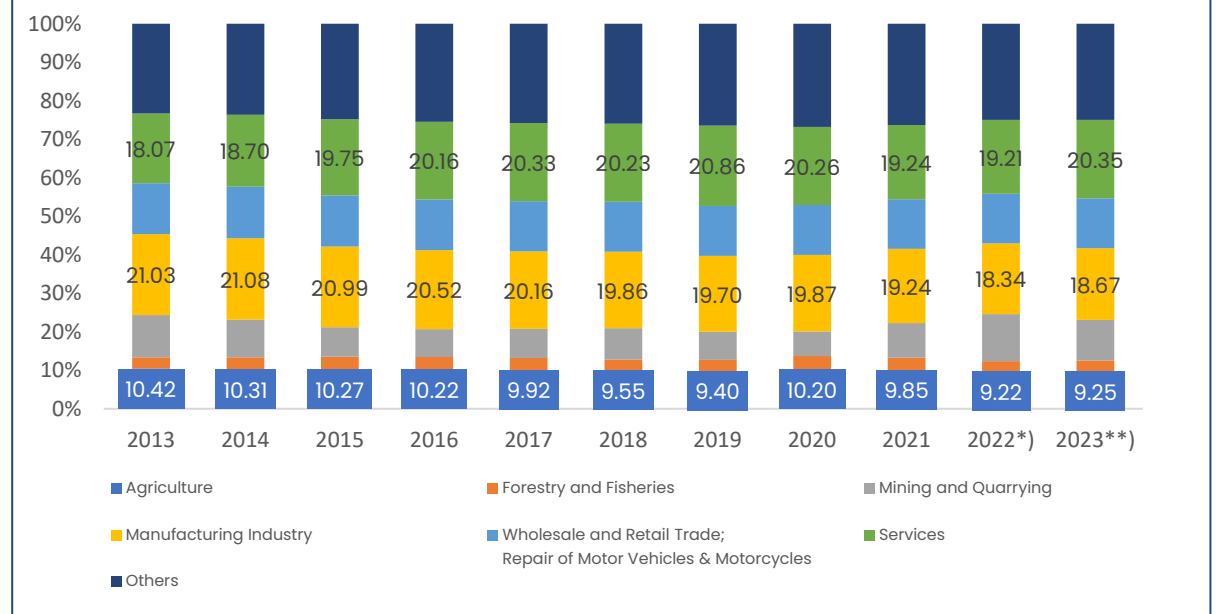
Value and Growth GDP in Agriculture Sector 2013-2023 at 2010 constant price



Note: \*) \*\*) Preliminary figures;  
Source: CBS

- ❑ Agriculture GDP slightly increases
- ❑ Agriculture sector has a positive growth during Covid-19 pandemic

Share of GDP by Major Sector (%)



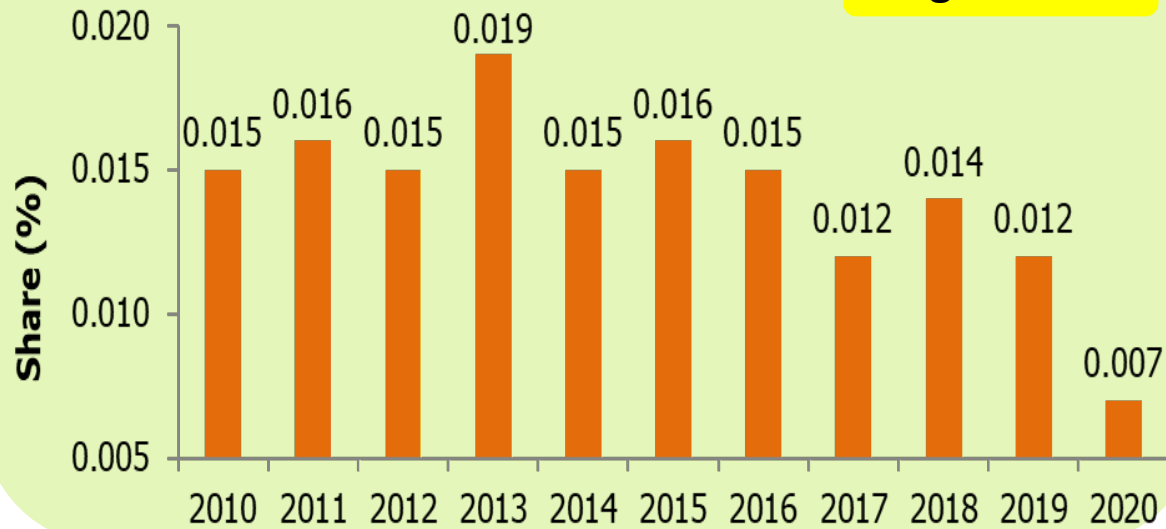
Notes: Services including transportation and logistics, horeca, financial services, insurance, others services (company, education, health, social and others)

- ❑ Agriculture GDP contribution to national GDP slightly decrease over time from 10,42% (2013) to 9,25% (2023)
- ❑ However, during Covid-19 pandemic (2020-2021), Agriculture GDP contribution is increased.

# Share of R&D Spending

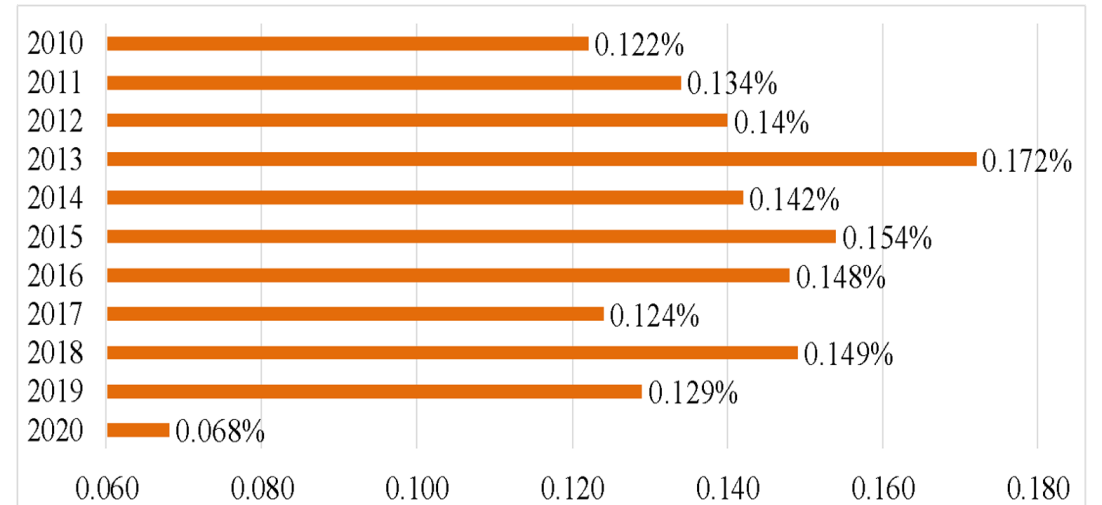
Share of R&D spending on food and agriculture to national GDP, 2010-2020 (%)

**Avg: 0.014%**



Share of R&D spending on food and agriculture to agricultural GDP, 2010-2020 (%)

**Avg: 0.135%**



# Current Major R&D Initiatives And Spending Trends

The amounts and shares of R&D spending by **thematic areas**, 2015-2020

R&D Spending	Thematic Areas			
	Breeding	Cultivation	Post-harvest	Food Security
<b>Food Crops:</b>				
Thousand USD	5,396	1,705	448	906
Share (%)	35.81	11.31	2.97	6.01
<b>Horticulture:</b>				
Thousand USD	1,530	405	170	0
Share (%)	10.15	2.69	1.13	0
<b>Estate Crops:</b>				
Thousand USD	665	268	83	0
Share (%)	4.41	1.78	0.55	0
<b>Livestock:</b>				
Thousand USD	2,726	677	91	0
Share (%)	18.09	4.49	0.60	0
<b>Total:</b>				
Thousand USD	10,317	3,055	792	906
Share (%)	68.46	20.27	5.26	6.01

The amounts and shares of R&D spending by **impact areas**, 2015-2020

R&D Spending	Impact Areas			
	Productivity	Nutrition	Climate Resilience	Sustainability
<b>Food Crops:</b>				
Thousand USD	7,477	317	110	264
Share (%)	50.05	2.12	0.74	1.77
<b>Horticulture:</b>				
Thousand USD	1,724	144	160	131
Share (%)	11.54	0.96	1.07	0.88
<b>Estate Crops:</b>				
Thousand USD	924	45	0	38
Share (%)	6.18	0.30	0	0.25
<b>Livestock:</b>				
Thousand USD	3,084	140	87	295
Share (%)	20.64	0.94	0.58	1.97
<b>Total:</b>				
Thousand USD	13,209	646	357	728
Share (%)	88.41	4.32	2.39	4.87



# Developing and Brokering Collaboration Research and Policy Formulation

## 1. High Quality Human Resources



Investment in high education and communication development

1. Study abroad
2. Overseas training
3. Participating in international conference
4. Join international research collaboration

1. Minimize language barrier
2. Adaptive to international environment
3. Confident
4. Improved skill (speaking, writing, analytical, policy formulation)

## 2. Well Trusted Researcher / Policy Analyst as Partners



Government

University



Private Sector

CSO(s)

Improves

1. Trust
2. Image

## 3. Conducive Environment / Equal Support



- ✓ G to G
- ✓ G to P
- ✓ P to P



Create larger impact areas



1. Small holder
2. Industry
3. Policy





Builds on

# Creating Strong Channels of Communication



Mutually exclusive especially on investment, experiences, transfer knowledge, interests



Long-term partnership



Clear expectation on objectives, targets and outcome



Balance on rights and responsibilities between partners



Open mind, logical & critical thinking



Strong coordination and open communication



Joint effort in addressing problems

R  
E  
S  
U  
L  
T  
S



**Produces high quality research result**

→ Measurements :

- a. Impact evaluation
- b. Policy formulation
- c. Journal publication



**High return on investment**

- a. Shares engagement G to G
- b. Impacts to smallholder
- c. Capacity buildings



**Expands and strengthens the networks (bilateral, reg, multilateral)**



**Provides rich career opportunities for researchers and policy analyst**



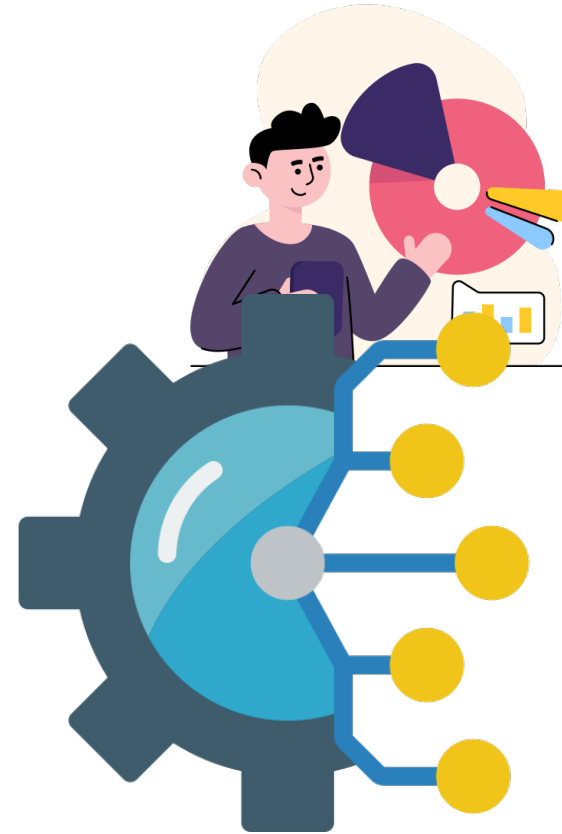
**Crawford Fund**  
FOR A FOOD  
SECURE WORLD

THE CRAWFORD FUND ANNUAL CONFERENCE

**Food and Nutrition Security: Transformative Partnerships, Local Leadership and Co-Design**



# Indonesia in The New Setting of Agriculture Research Transformation



- 1 Establish a bridging in **communication** to facilitate translation innovation into programs and policy formulation
- 2 Focus on the **needs** of the **technology users** → small holder
- 3 Speed up the transition time – **new administrative** is the opportunity
- 4 Reactivate the **agriculture innovative** systems by maximizing the researcher's extension linkage

Integrate research outcome as evidence for policy translation

5

Measure the impacts from policy implementation

6

Improve policy formulation

7

Identify benefits

8





# IMPACT AND BENEFITS

Integration of smallholder cattle breeding enterprises with palm oil and rice

Increase HRD capacity in beef sector



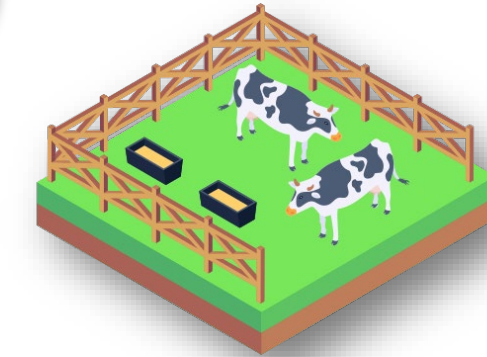
Improving farmer welfare and generate profit



Improved technology adoption on nutrition source from forage tree legumes



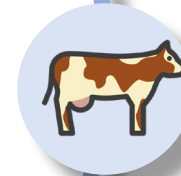
Improved nutrition for local breed



Sharing and building knowledge on beef cattle sector; 22 projects from 2007-2020



Integrated mapping on supply and value Chain and market analysis



Improving smallholder cattle fattening systems based on local forages



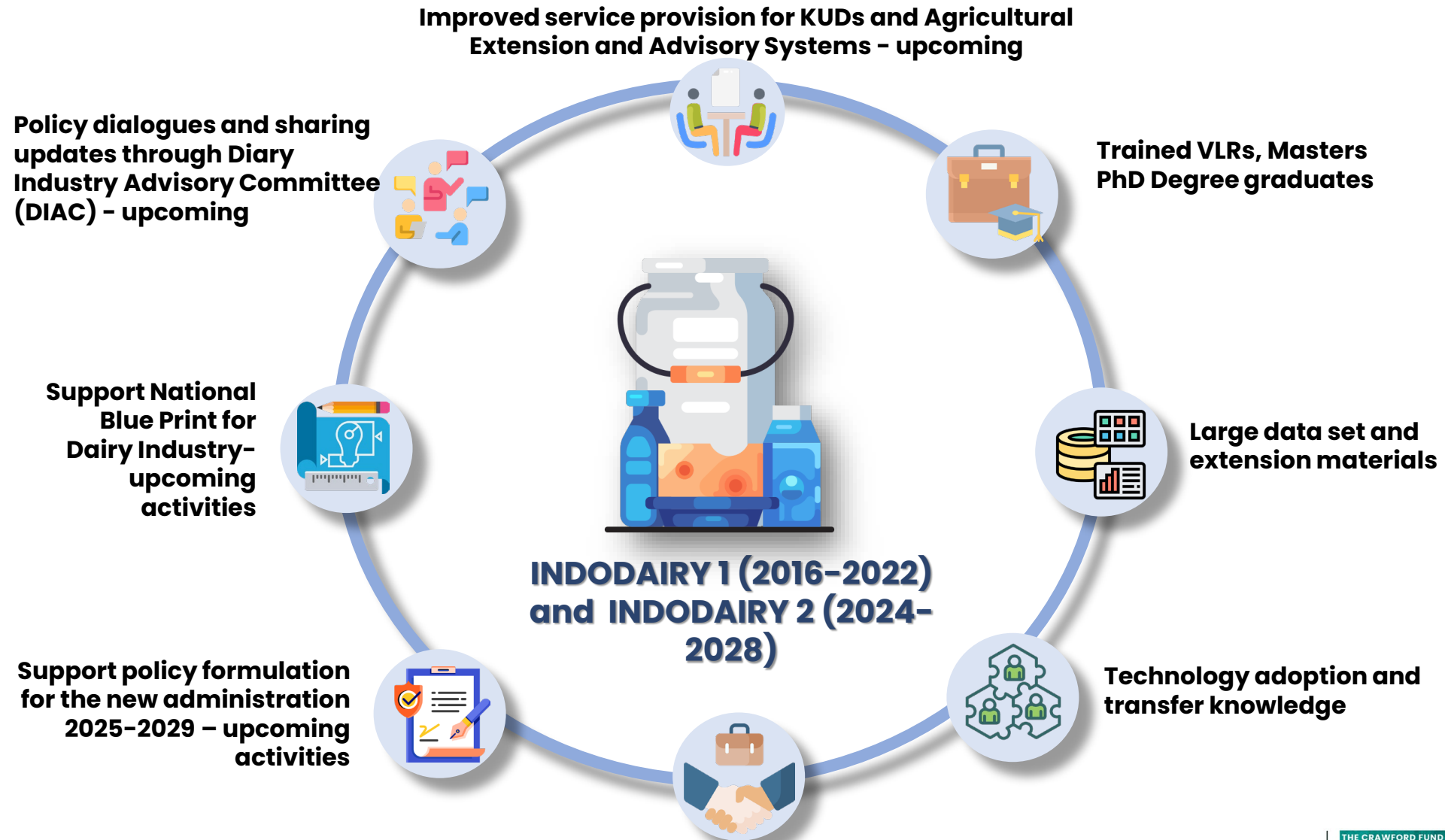
Reproductive performance and adaptation



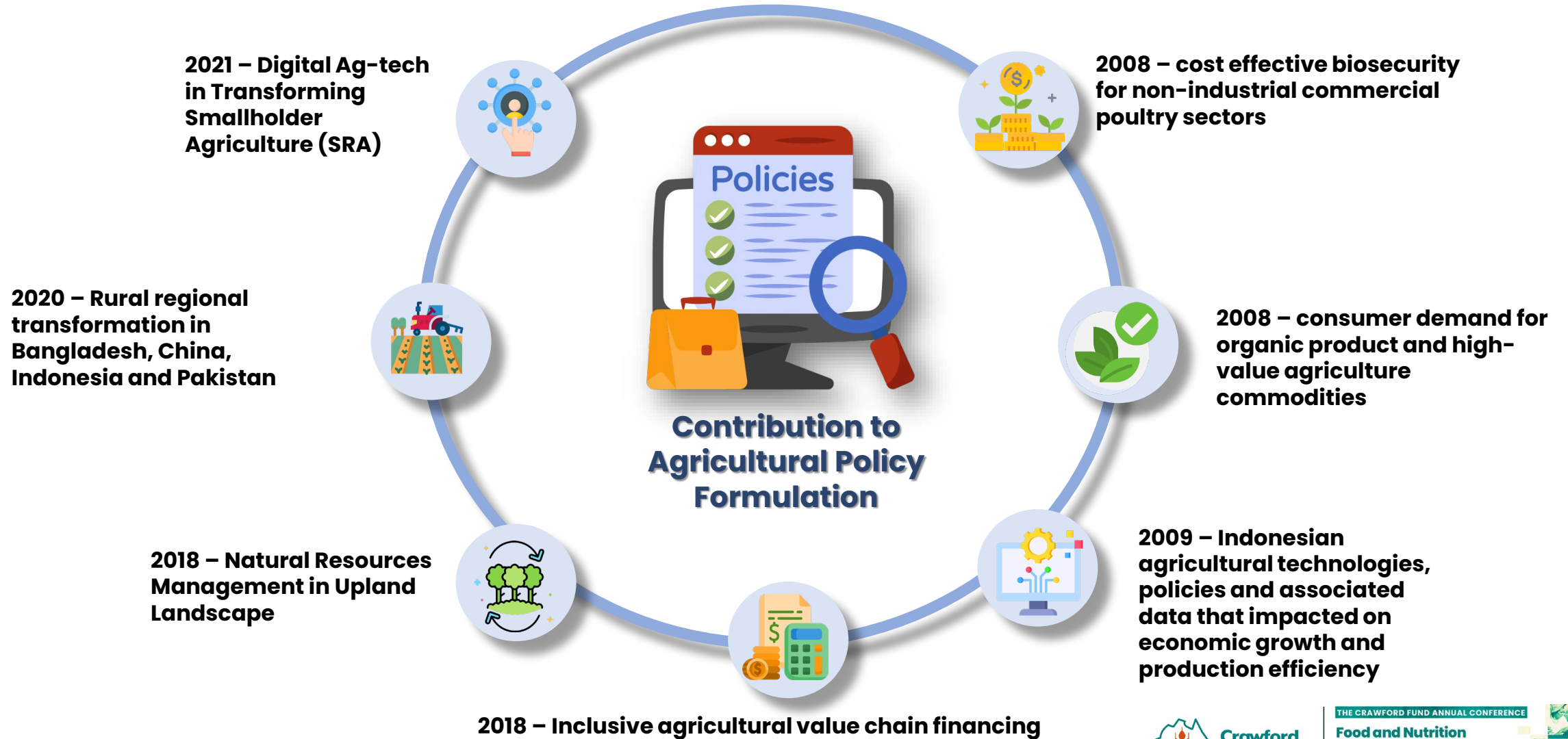
# IMPACT AND BENEFITS



# IMPACT AND BENEFITS



# IMPACT AND BENEFITS



# THANKS



**"Creating Strong Channels of  
Communication for Agriculture Policy  
Research in Indonesia"**

Wahida Maghraby - ICASEPS

**Session 2: Constructing Effective, High – Quality Research Partnership  
Tuesday, 13 August 2024**